



## Web Timesheet Entry

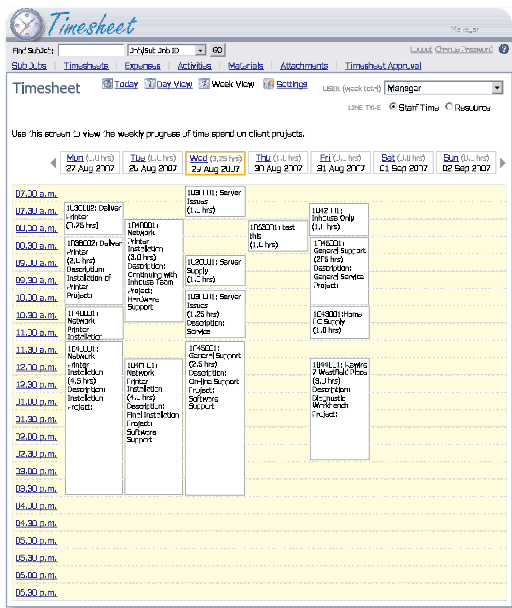
Empower your field workforce to spend more billable time at client sites and less time in the office.

With Web Timesheet Entry, your staff are freed up to focus on doing their jobs out in the field, rather than entering timesheets in the office.

### Workforce Timesheeting & Expense Capture

Web Timesheet Entry is an extensive time and expense capture solution that will enable your field staff to track time and business related expenses quickly, accurately and with minimum overhead.

The calendar-style design is familiar and intuitive – staff can be up and running in minutes, with minimal training required.



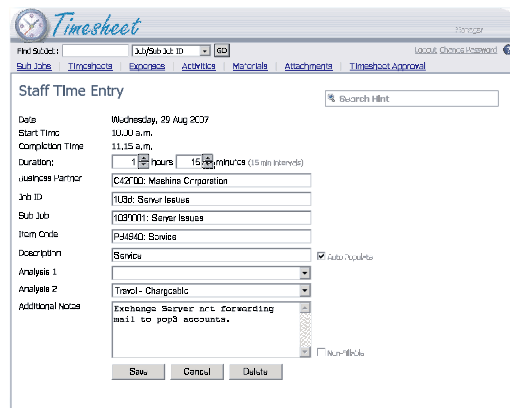
Web-based timesheeting solution including workforce, expenses and plant usage entry.

Daily and weekly views allow technicians to easily 'fill in the gaps' before posting timesheets to the Job Costing system.

Online approval procedures ensure that project managers and employee managers can review and approve all entries before updating the financial and job data.

### Faster Delivery

Web Timesheet Entry is delivered using an Internet browser and uses any active Internet connection to link directly to your company's SAP system. This means there are no custom client applications or database replication tools that need to be installed and staff can access data from your Job Costing and SAP systems in real-time.

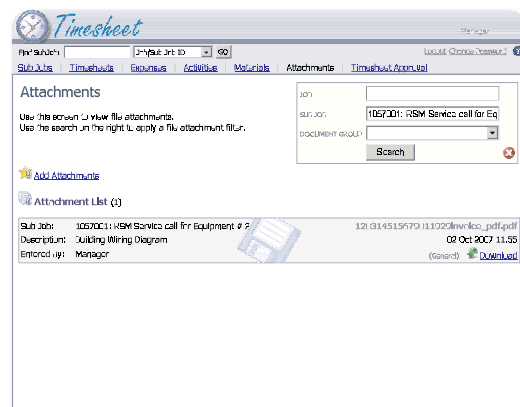


Timesheet Entry

### Document Management

Using the powerful web-based document management system, users can attach documents of any kind to jobs or download, review and print documents from jobs – all while at a client's site.

Staff back in the office can immediately review documents attached to jobs by staff in the field.



Document Management and Sharing