

## INTEGRATING CRYSTAL REPORTS® WITH SAP® BUSINESS ONE

### COMPREHENSIVE REPORTING TO DRIVE SMALL BUSINESS SUCCESS

Converting raw business data into meaningful information that can be acted upon remains an ongoing challenge for most small businesses. Few reporting tools have the functionality not only to gather data from appropriate systems but also to transform that data into a format that is useful for a business user. As a result, businesses are often compelled to cobble together reports from data that has been imported in an ad hoc manner from different applications. Additionally, since most small businesses have very limited IT resources, they constantly look for ways to make it easier for their employees to create, manage, and distribute reports.

The Crystal Reports® family of offerings from the SAP® BusinessObjects™ solution portfolio is a powerful and dynamic reporting solution that helps users design, explore, visualize, and deliver compelling reports and information across the enterprise network (see table). With complete integration with the Microsoft Office products and a focus on data security, Crystal Reports allows you to choose from a variety of report formats and to control access to information displayed. Together, SAP Business One and Crystal Reports provide comprehensive reporting functionality that allows you to get crucial insights into all parts of your business.

#### Features of Crystal Reports

Report Creation and Customization	Viewing Reports	Publishing, Distribution, and Access with Crystal Reports® Server
Create reports in a variety of layouts with interactive drill downs	View and export reports to Adobe PDF, Microsoft Word, Microsoft Excel, RTF, and XML	Publish reports to the Web
Use powerful cross-tabs for rapid and enhanced financial reporting	Enable powerful visualizations and interactivity by embedding Adobe Flash (SWF) files created in any tool	Distribute reports across the enterprise by e-mail, fax, electronic file transport, and standard printing
Customize reports by adding any standard SAP® Business One data field or user-defined field	Use on-report sorting, filtering, and reformatting without requerying the database	Access files anywhere and anytime with the viewer for Crystal Reports software, even without a network connection
Perform what-if scenario modeling directly in reports when Crystal Reports is combined with Xcelsius® Engage software	Drill down into transactional details while preserving security at user and report levels with Crystal Reports Server software	Assign access rights at user and group levels

The SAP® Business One application, together with the Crystal Reports® offerings from the SAP BusinessObjects™ portfolio, delivers compelling reporting functionality and information access to small businesses. With these offerings, small businesses can get up-to-date intelligence to drive decision making.



## Get Accurate Reports with Integrated Reporting and Analytics

With the integration of Crystal Reports and SAP Business One, you can launch the latest release of Crystal Reports from within the SAP Business One application. You can then access data from SAP Business One and from associated applications from SAP software solution partners.

You can install the integration add-on using the standard mechanism for installing add-ons and can access it from the main menu in SAP Business One. Once installation is complete, you can publish any Crystal Reports .rpt file on the associated menu area in SAP Business One and run the reports from any SAP Business One client. You can create groups, assign users to the groups, and then specify access rights that allow only certain people to run the reports.

## Create Comprehensive Reports with Stunning Visualizations

SAP Business One and Crystal Reports allow you to create new reports and customize existing ones using a variety of presentation formats that include interactive drill-down functionality and sophisticated formatting. Together, the offerings provide reporting for all business processes supported by SAP Business One, including accounting, sales, purchasing, production, inventory, service, and management.

You can create advanced report designs and visualizations by adding dynamic charts, graphics, and even video files to your reports (see Figure 1). Adobe Flash offers a wide variety of

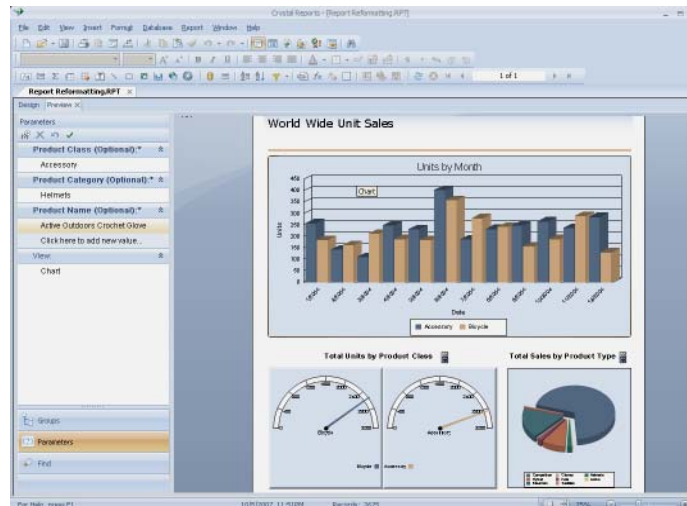


Figure 1: Interactive Reports with Multiple Data Views

flexible data presentation options. You can quickly embed Flash (SWF) files into your reports for compelling and information-rich reports.

You can customize reports by adding standard SAP Business One data fields or any user-defined fields to a report layout. You can also attach messages with personalized information, helping to increase reading rates. Reports then can be exported into electronic formats that best fit your specific business needs, including Adobe PDF, Microsoft Word, Microsoft Excel, RTF, and XML. You can print, fax, or e-mail them and also save them securely to [www.crystalreports.com](http://www.crystalreports.com), allowing you to access them anywhere and at any time. Comprehensive security features help ensure that your employees view and access only the data that they are authorized to access.

In addition, you can download the viewer for Crystal Reports, enabling you to interactively explore Crystal Reports files, with or without a network connec-

tion, in client meetings or on a business trip. With this flexibility, you can stay in touch with your business wherever you are.

## Maximize Productivity with Interactive Reports

On-report sorting, filtering, and reformatting allow you to explore information interactively without requerying the database. This means that you can answer business questions faster and with fewer reports, significantly reducing report proliferation and dependence on IT. For example, you can access the specific report information you need in seconds by selecting the desired data view from the report viewer's parameter panel.

In addition, you can improve your operational efficiency by integrating reporting with existing processes and executing business decisions from within reports. By embedding Adobe Flex (SWF) applications, you can integrate operational workflows in your reports

to perform tasks such as database write-back. Use-case scenarios may include clicking the “approve” or “reject” button on an expense report or providing instant feedback via a comments box. You might also click the “buy” button on a report that links to an online store and enables you to place an order directly from the report. This innovative feature makes static reports actionable and increases end-user productivity.

By integrating Xcelsius® Engage software in your Crystal Reports, you can perform what-if scenario modeling directly in the report and visualize the potential outcome of your decisions (see Figure 2). This strong decision support tool delivers answers to multiple business questions in the same report, thereby reducing report proliferation in your organization.

### Expand the Scope by Adding Crystal Reports Server

By adding Crystal Reports Server software, you can expand the scope of your application and enhance the value to your business in many ways. Crystal Reports Server provides all the data access and features of Crystal Reports in a managed, secured server environment.

You can automate the production of reports at a prescheduled time and set up automated delivery using e-mail or print, or by saving to a shared directory on the server or directly to the Crystal Reports Server business intelligence portal. This flexibility allows you to manage and share your reports securely without depending on IT.

Crystal Reports Server adds security at both the report level and the data level. Reports and folders are visible only to certain users or groups. Data-level security allows the same report to show different rows of data to different users when the report is based on the semantic layer. Crystal Reports Server can integrate with the Microsoft Windows Active Directory and with Lightweight Directory Access Protocol (LDAP)-based security for single sign-on convenience.

Take advantage of the power of Crystal Reports Server to deliver information to your employees via an integrated Web-based user portal. By utilizing the Crystal Reports Server business intelligence portal, which is a complete, production-ready Web portal, you can deploy the solution as a Web-based information system and enable your employees to access, view, and interact with reports securely over the Web.

On-report sorting, filtering, and reformatting allow you to explore information interactively without requerying the database. This means that you can answer business questions faster and with fewer reports.

### Learn More

To learn more about the synergy between SAP Business One and Crystal Reports and how these offerings can give you the insight into your business to make the right decisions, call your SAP representative or visit us at [www.sap.com/solutions/sapbusinessobjects/sme/reporting/index.epx](http://www.sap.com/solutions/sapbusinessobjects/sme/reporting/index.epx).

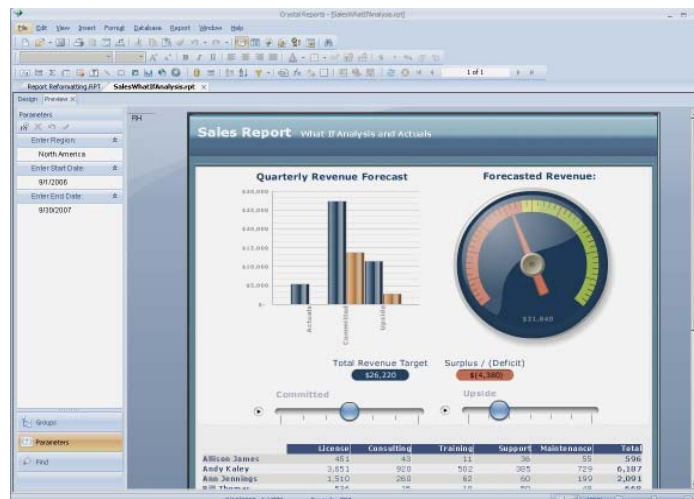


Figure 2: On-Report “What If” Scenario Modeling

---

## Summary

Together, the SAP® Business One application and Crystal Reports® software deliver compelling reporting functionality. Taking advantage of these offerings will significantly increase your productivity, whether you are developing new reports, customizing existing ones, or distributing reports across the enterprise.

---

## Business Challenges

- Gather data contained in various places and generate timely reports
- Distribute information to those who need it and access it anywhere and anytime
- Control access to sensitive business data

---

## Key Features

- **Report creation and customization** – Access data from multiple sources, create new reports, or customize existing ones in a variety of layouts with minimal IT overhead
- **Report viewing** – Enable powerful visualizations and interactivity using integrated tools such as Adobe Flash and Adobe Flex
- **Publishing and distribution** – Export reports to electronic formats that best fit your business needs, and deliver them either over the Web or embedded in other applications, including portals, while preserving security

---

## Business Benefits

- **Faster and better decision making** thanks to timely and accurate reports based on critical company data across financials, sales, customers, inventory, service, production, and operations
- **Cost savings** resulting from reduction in time and effort required to generate reports and reduced dependence on IT
- **Improved access** to critical business information any way people require it and at any time

---

## For More Information

Call your SAP representative or visit us online at [www.sap.com/solutions/sapbusinessobjects/sme/reporting/index.epx](http://www.sap.com/solutions/sapbusinessobjects/sme/reporting/index.epx).

50 093 131 (09/01)

©2009 by SAP AG.

All rights reserved. SAP, R/3, SAP NetWeaver, Duet, PartnerEdge, ByDesign, SAP Business ByDesign, and other SAP products and services mentioned herein as well as their respective logos are trademarks or registered trademarks of SAP AG in Germany and in other countries.

Business Objects and the Business Objects logo, BusinessObjects, Crystal Reports, Crystal Decisions, Web Intelligence, Xcelsius, and other Business Objects products and services mentioned herein as well as their respective logos are trademarks or registered trademarks of Business Objects S.A. in the United States and in other countries. Business Objects is an SAP company.

All other product and service names mentioned are the trademarks of their respective companies. Data contained in this document serves informational purposes only. National product specifications may vary.

These materials are subject to change without notice. These materials are provided by SAP AG and its affiliated companies ("SAP Group") for informational purposes only, without representation or warranty of any kind, and SAP Group shall not be liable for errors or omissions with respect to the materials. The only warranties for SAP Group products and services are those that are set forth in the express warranty statements accompanying such products and services, if any. Nothing herein should be construed as constituting an additional warranty.